

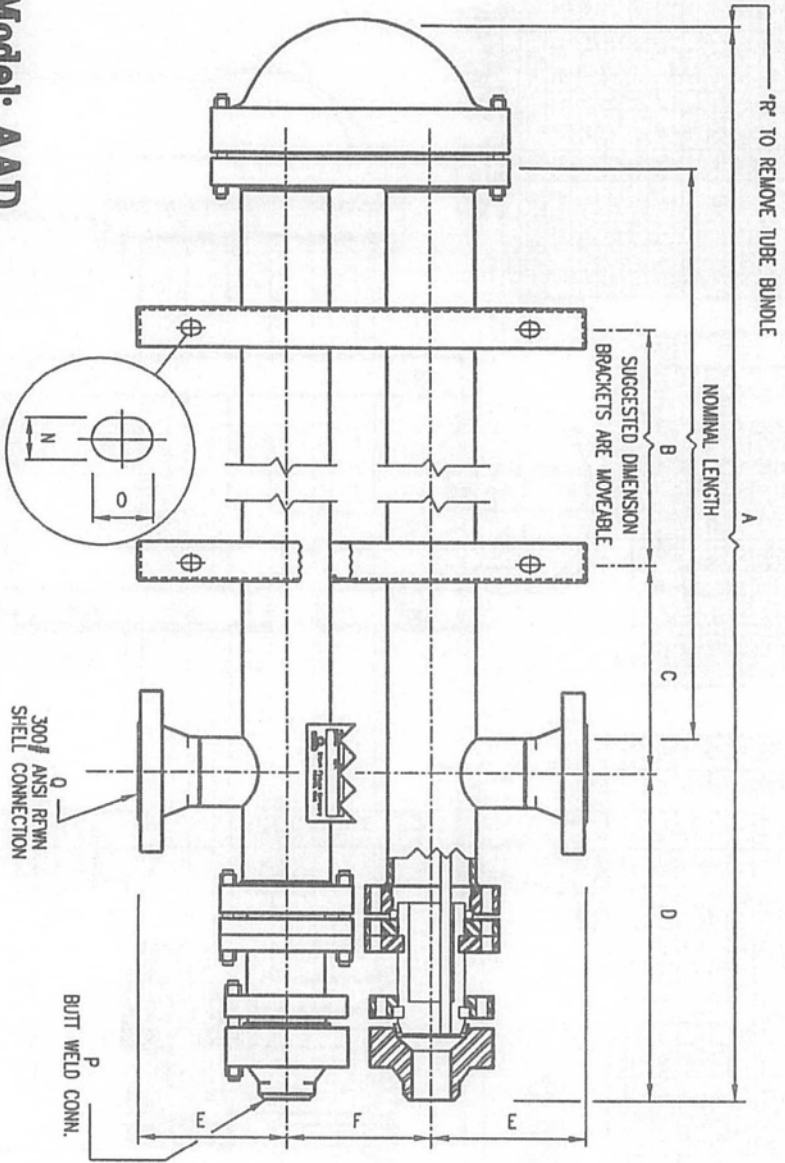


HEAT TRANSFER

# Separated-Head Multitube with TAPER-LOK® Closure - High Pressure Tubeside

12602 FM 529 • HOUSTON, TEXAS, USA 77041 • PH. NO.: (713) 466-5535 • FAX. NO.: (713) 466-3701

This patented pressure energized closure employs the Taper-Lok® seal ring which remains visible during assembly, assuring proper ring alignment and sealing. Excellent in cycling, vibrating or high temperature services.



Model: AAD

Sz	N.Lgth	A •	B	C	R •	W/Lbs
5'	7'-6"	3'-6"	12"	7'-3"	705	
10'	12'-6"	8'-6"	12"	12'-3"	885	
15'	17'-6"	11'-0"	24"	17'-3"	1070	
20'	22'-6"	14'-0"	36"	22'-3"	1250	
25'	27'-6"	19'-6"	36"	27'-3"	1430	
5'	8'-4"	3'-0"	12"	8'-1"	1410	
10'	13'-4"	7'-0"	12"	13'-1"	1740	
15'	18'-4"	10'-6"	24"	18'-1"	2070	
20'	23'-4"	13'-6"	36"	23'-1"	2400	
25'	28'-4"	19'-6"	36"	28'-1"	2735	
5'	8'-7"	2'-6"	12"	8'-4"	2240	
10'	13'-7"	6'-6"	24"	13'-4"	2790	
15'	18'-7"	10'-0"	24"	18'-4"	3345	
20'	23'-7"	13'-0"	36"	23'-4"	3900	
25'	28'-7"	19'-0"	36"	28'-4"	4455	

Sz	N.Lgth	A •	B	C	R •	W/Lbs
5'	9'-8"	2'-6"	12"	9'-0"	3715	
10'	14'-8"	6'-6"	24"	14'-0"	4540	
15'	19'-8"	10'-0"	24"	19'-0"	5370	
20'	24'-8"	14'-0"	36"	24'-0"	6200	
25'	29'-8"	18'-0"	36"	29'-0"	7025	
5'	9'-11"	2'-6"	12"	9'-2"	4670	
10'	14'-11"	6'-6"	24"	14'-2"	5630	
15'	19'-11"	10'-0"	24"	19'-2"	6990	
20'	24'-11"	14'-0"	36"	24'-2"	8150	
25'	29'-11"	18'-0"	36"	29'-2"	9315	
5'	11'-0"	2'-6"	12"	10'-7"	7255	
10'	16'-0"	6'-6"	24"	15'-7"	9020	
15'	21'-0"	10'-0"	24"	20'-7"	10785	
20'	26'-0"	14'-0"	36"	25'-7"	12550	
25'	31'-0"	18'-0"	36"	30'-7"	14320	

Sz	D	E	F	G	H	I	J
4"	20 3/4"	7 5/8"	7 1/2"	15 1/4"	7 5/8"	22 3/4"	3 3/8"
6"	24 7/8"	9 5/8"	12"	19 1/4"	9 5/8"	31 1/4"	4 5/8"
8"	29 5/8"	11 1/2"	13 3/8"	23"	11 1/2"	36 3/8"	6"
10"	33 1/4"	13 1/4"	17 1/2"	26 1/2"	13 1/4"	44"	5"
12"	37 1/2"	15 1/4"	20"	30 1/2"	15 1/4"	50 1/2"	7 1/4"
16"	42 1/2"	17 7/8"	26"	35 3/4"	17 7/8"	61 3/4"	6 7/8"

(8) RECD. PER SUPPORT BRACKET

(SLOT LOCATIONS)

\* Dimension rounded up to nearest inch  
 \*\* Weights are based on 3/4" dia., 14 gage tubes. Add 10% to weight shown if tubes are flared

NOTE:  
 This quote sketch is furnished to allow the Customer to begin "preliminary" design on the Customer's foundation and piping drawings.

Weights shown are approximate w/o turbulators, wire wrapped cores, etc.

The information furnished herein is for a STANDARD unit. If your particular order is a custom design, use this bulletin for "approximate dimensions" until a certified drawing is furnished.